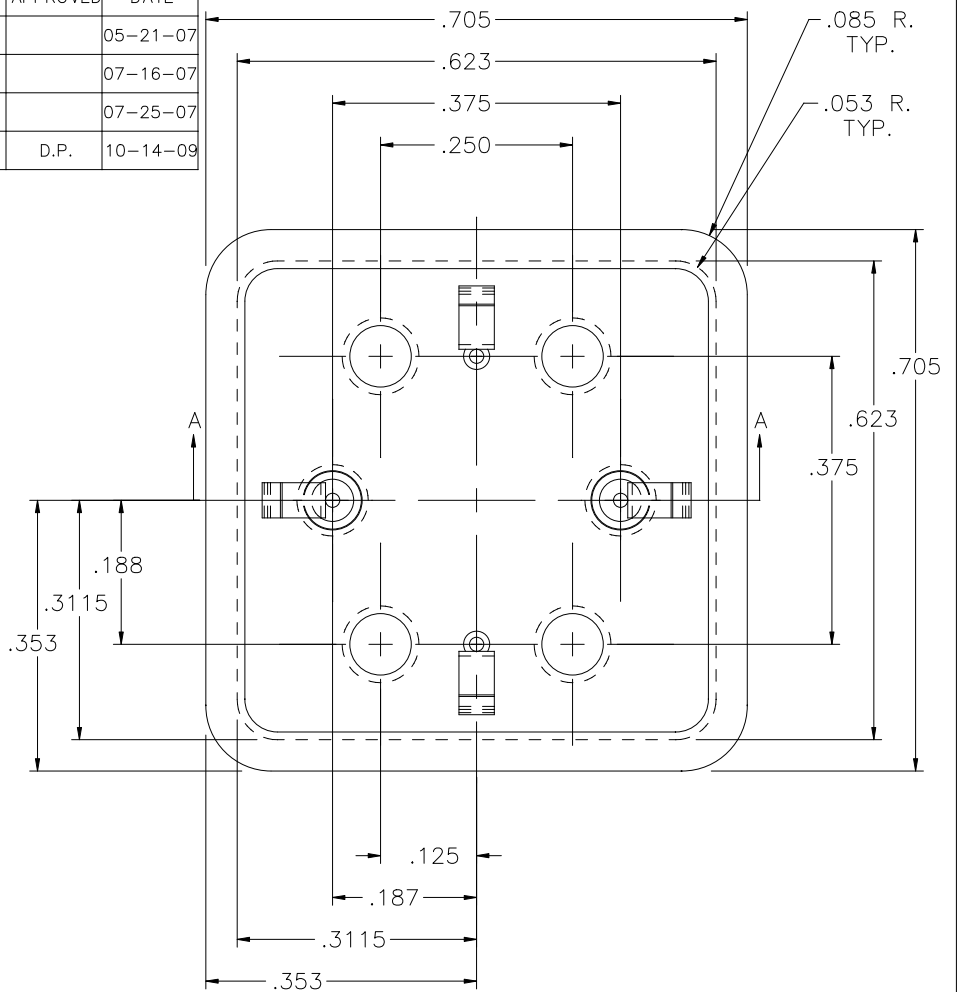


REV	DESCRIPTION OF REVISION	E.C.N.	CHECKED	APPROVED	DATE
A	ADDED LEAD DIA.		E.T.W.		05-21-07
B	ADJUSTED DIM. WAS .195±.015 NOW .200 REF. & .060±.010 P.H.		E.T.W.		07-16-07
C	ADJUSTED DIM. WAS .090±.010, .116±.010 & .135±.010		E.T.W.		07-25-07
D	CORRECTED DIM. TO WELD SETUP WAS .106±.010 & .125±.010		E.T.W.	D.P.	10-14-09



MATERIAL:

(BASE) - 30/70 COPPER CLAD KOVAR

(FEED THRU)

EYELET - ASTM F-15 ALLOY, KOVAR.

GLASS - 7052 OR EQUAL.

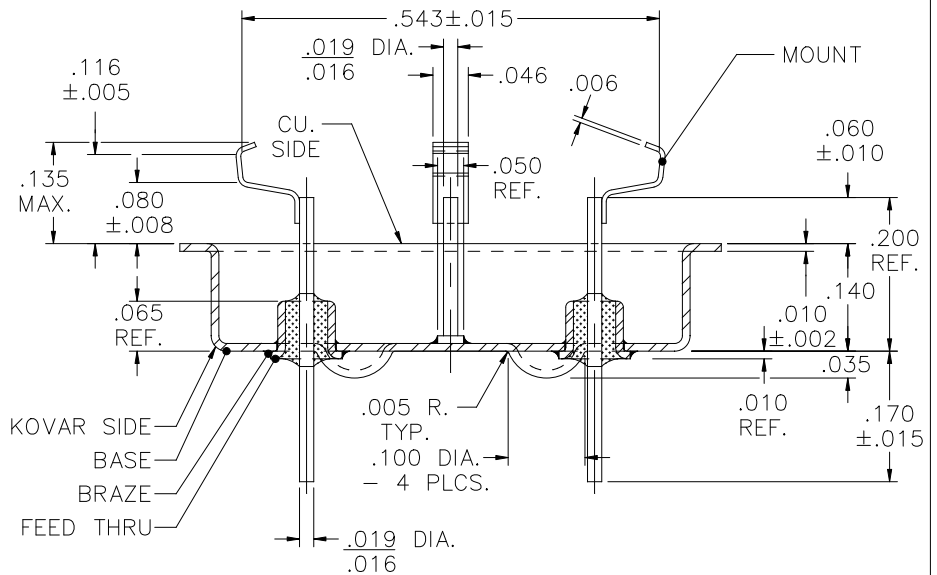
LEADS - ASTM F-15 ALLOY, KOVAR.


(BRAZE) - BT. VTG. CU. AG. EUTECTIC.

(MOUNT) - NICKEL.

PLATING:

1. OPTION: RoHS COMPLIANT ELECTROLESS NICKEL PLATE OF 100 MICROINCHES MINIMUM FINAL PLATE.
2. OPTION: RoHS COMPLIANT ELECTROLESS NICKEL PLATE OF 100 MICROINCHES MINIMUM FOLLOWED BY A RoHS COMPLIANT LEAD FREE SOLDER COAT, ON LEADS ONLY.
3. OPTION: RoHS COMPLIANT ELECTROLESS NICKEL PLATE OF 100 MICROINCHES MINIMUM FOLLOWED BY A GOLD FLASH OF .99999 PURE 24 KARAT GOLD UP TO A MAX. OF 8 MICROINCHES.



DRAWN BY: E.T.W. 03-26-07	MATERIAL: SEE ABOVE	TOLERANCING PER ANSI Y14.5 .X ±.005 .XXX ±.005 .XX ±.005 ANG ±5° UNLESS OTHERWISE SPECIFIED		 6700 W. 47th TERR. MISSION, KS. 66203 TEL: 913-432-2487 FAX: 913-432-0570	
CHECKED BY: A.B. 03-30-07	APP. SPECS E-529 ELN (QTY. 1) FT-201002-0199 (QTY. 2) BR-033 (QTY. 2) NH-007-H W/ 0125-4 (QTY. 2) HC-39/U COV (QTY. 1)	SUPERSEDES	NEXT ASSY		SCALE: 4:1 FINISH: UNLESS OTHERWISE SPECIFIED
APPROVED BY: D.B. 03-30-07	TITLE: HC-39/U COPPER CLAD KOVAR HEADER W/ NAIL HEADS & L.T.I. / KANE 1774 MOUNT			PART NUMBER: FP-001-D-CMN646A RoHS	D
				FILE: EB00077	PAGE 1 OF 1