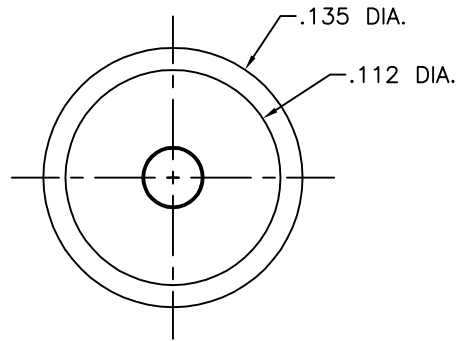
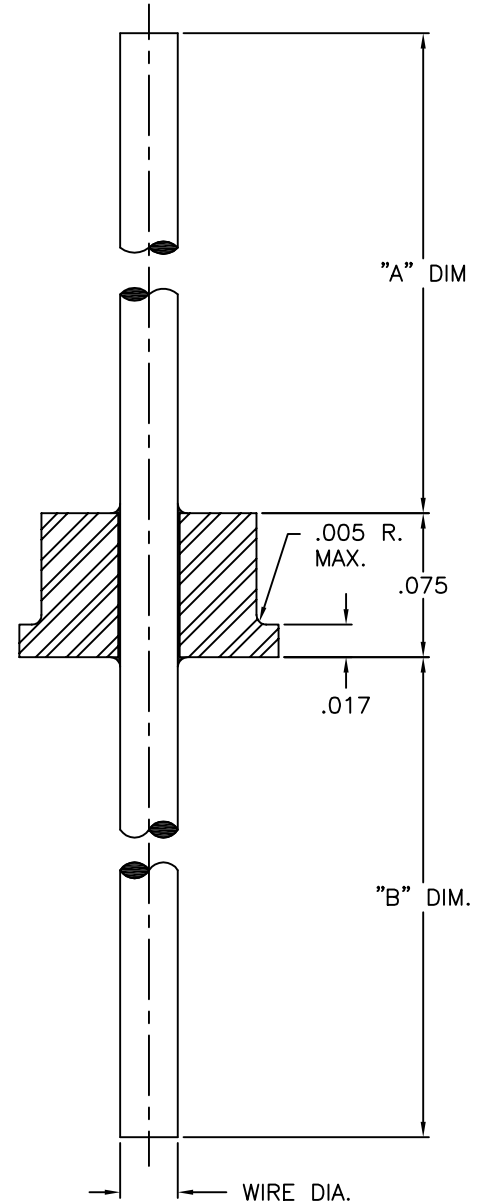


REV	DESCRIPTION OF REVISION	E.C.N.	BY	APPROVED	DATE
B	ADDED -S		T.J.M.	E.T.W.	04-25-97
C	ADDED -AG		E.T.W.	E.T.W.	07-08-98
D	ADDED -AT		E.T.W.	E.T.W.	06-25-04
E	ADDED -AX		E.T.W.	E.T.W.	10-27-09
F	UPDATED DIM. TO MATCH EYELET PRINT. WAS .134 DIA.		E.C.	E.T.W.	09-03-14




FT-134-AX T16	.114±.010	.374±.010	.032/.028
FT-134-AT T16	1.092±.010	.708±.010	.042/.038
FT-134-AG T16	.712±.010	.753±.010	.042/.038
FT-134-S T16	.567±.010	.303±.015	.032/.028
FT-134-M T16	.570±.010	.260±.010	.032/.028
FT-134-L T16	.712±.010	.753±.010	.032/.028

PART NO.	"A" DIM.	"B" DIM.	WIRE DIA.
----------	----------	----------	-----------



MATERIAL:
 EYELET - 1010 C.R.S.
 LEAD - ASTM F-30, 52 ALLOY.
 BRAZE - BT VTG AG. CU. EUTECTIC.

PLATING:
 1. PLATE EYELET AND LEADS PRIOR TO FUSING WITH ELECTROLYTIC NICKEL. AFTER FUSING PLATE PER MIL-STD QQ-S-571-D TIN LEAD ALLOY.

DRAWN BY: TINA MOSS 10-31-95	MATERIAL: SEE ABOVE			TOLERANCING PER ANSI Y14.5 .X ± .005 .XXX ± .005 .XX ± .005 ANG ± 5 UNLESS OTHERWISE SPECIFIED		 Legacy Technologies Inc. 6700 W. 47th TERR. MISSION, KS. 66203 TEL: 913-432-2487 FAX: 913-432-0570
	CHECKED BY: E.T.W. 10-31-95	APP. SPECS	SUPERSEDES	NEXT ASSY FT-134 GROUND SERIES	SCALE: 10:1	
APPROVED BY:	TITLE: GROUND FEED THRU				PART NUMBER: SEE PART NO.	F
FILE: EA00002		PAGE		1 of 1		